



Waikane Valley Impact Area Remedial Design Phase





Topics



- **Introduction & Background**
- **Status of Decision Document**
- **Remedial Design Phase**
- **Remedial Action Phases**



Introduction



- **Background**
 - **Final SI Report- (Nov 13, 2009)**
 - **RAB Established - (April 2009)**
 - **Final RI Report - (Aug 3, 2011)**
 - **Final FS Report - (Jan 2, 2012)**
 - **Final Proposed Plan - (Jan 2, 2012)**
 - **Final Decision Document - (Feb 26, 2013)**
 - **Remedial Design (current)**



Status of Decision Document



- **Final DD**
 - **Defines the Selected Remedy to meet Remedial Action Objectives (RAOs)**
- **Public Comments Received/ Incorporated**
- **Signed by HDOH / MCB Hawaii**



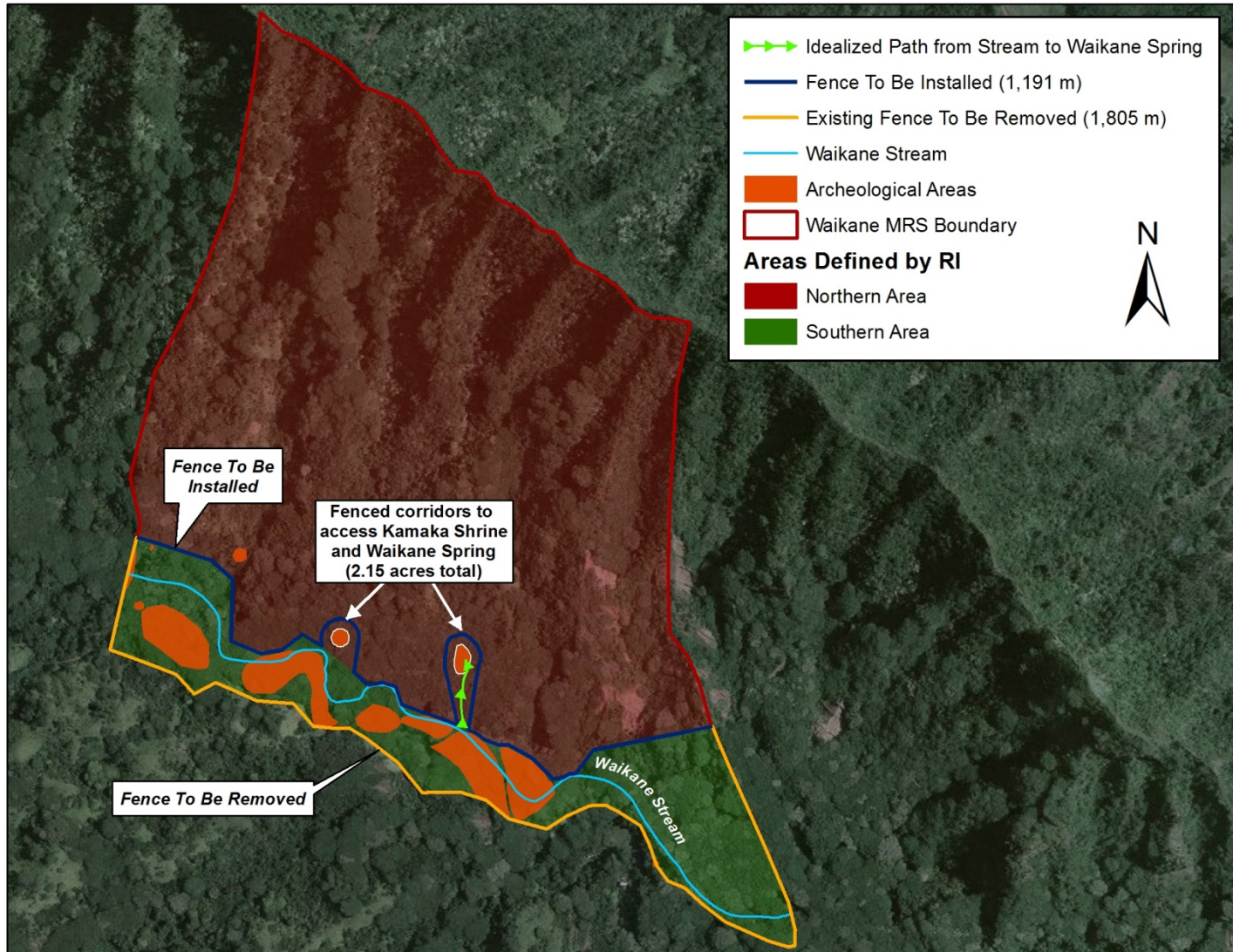
Remedial Design Phase



- **Detailed Design that outlines the requirements to implement the Selected Remedy from the DD.**
- **RD is incorporated into the Remedial Action Contractor's Scope of Work**
- **Included Public Input on Corridor Designs**



Selected Remedy





RAB Site Visit/ Input to the RD



RD Team and RAB members conducted site visit on 1 September 2012 for the purposes gathering public input for the RD





RAB Site Visit/ Input to the RD Cont.



- **Suggested screening methods:**
 - Locating fencing behind terrain features (ridgelines and gullies)
 - Offsetting fencing behind areas of dense vegetation
 - Use of “cattle fencing” in select areas (steep terrain)





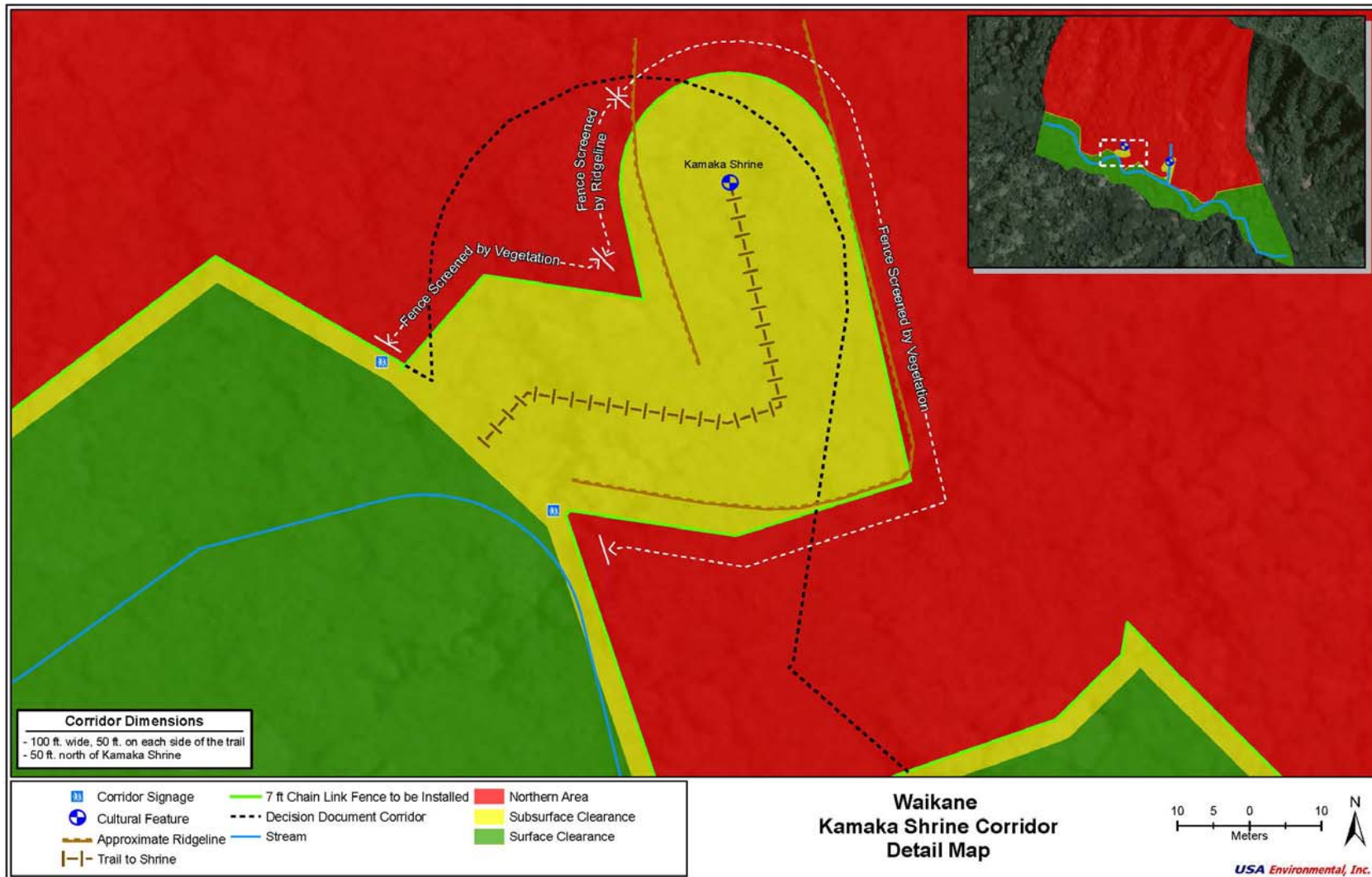
RAB Site Visit/ Input to the RD Cont.



- **RD team marked suggested fencing routes using Global Positioning Systems (GPS) based on RAB input.**
- **GPS points for fencing locations, terrain, and other significant features were translated to design maps for the RD.**

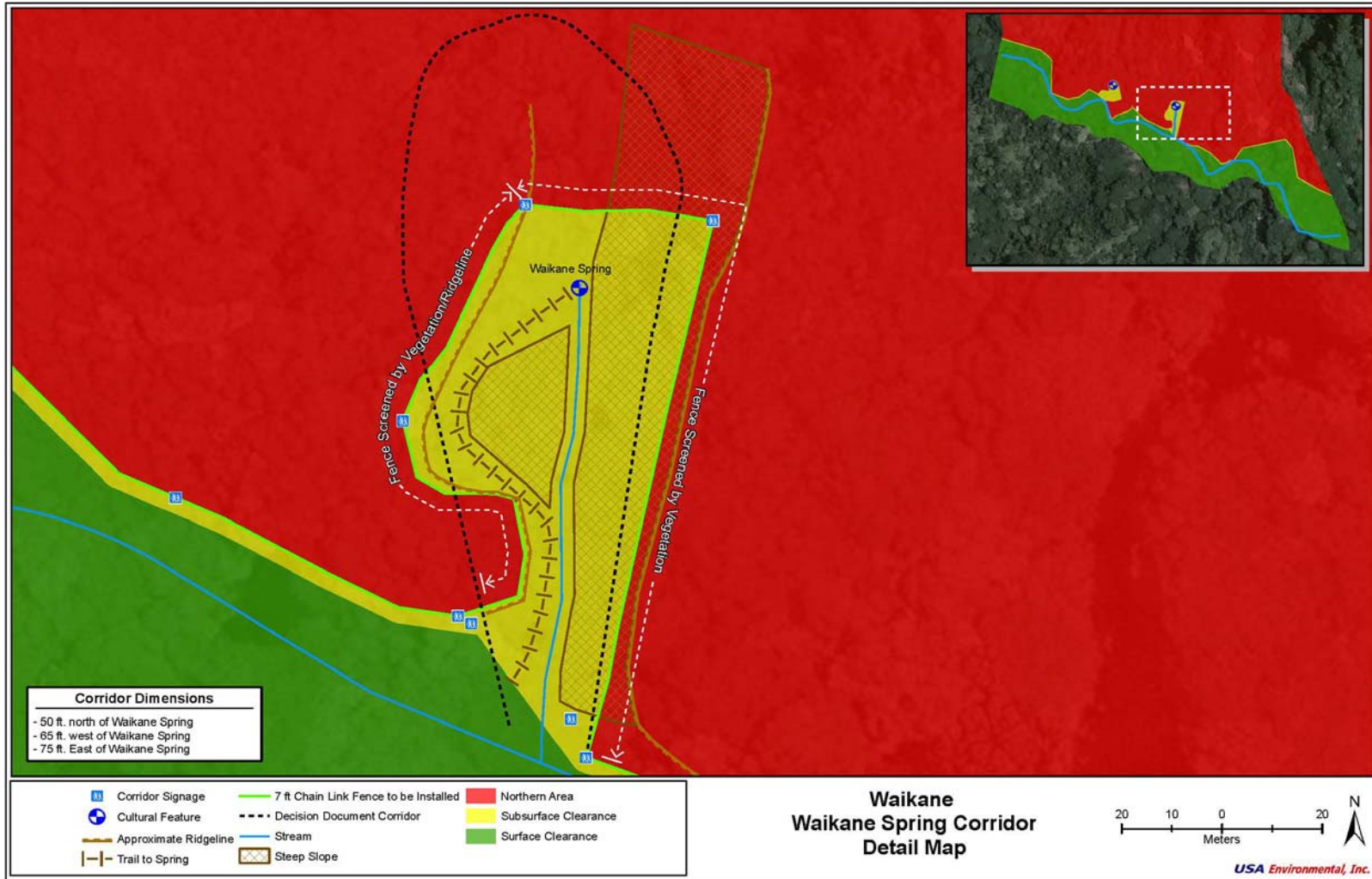
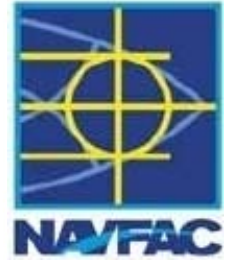


Kamaka Shrine Corridor



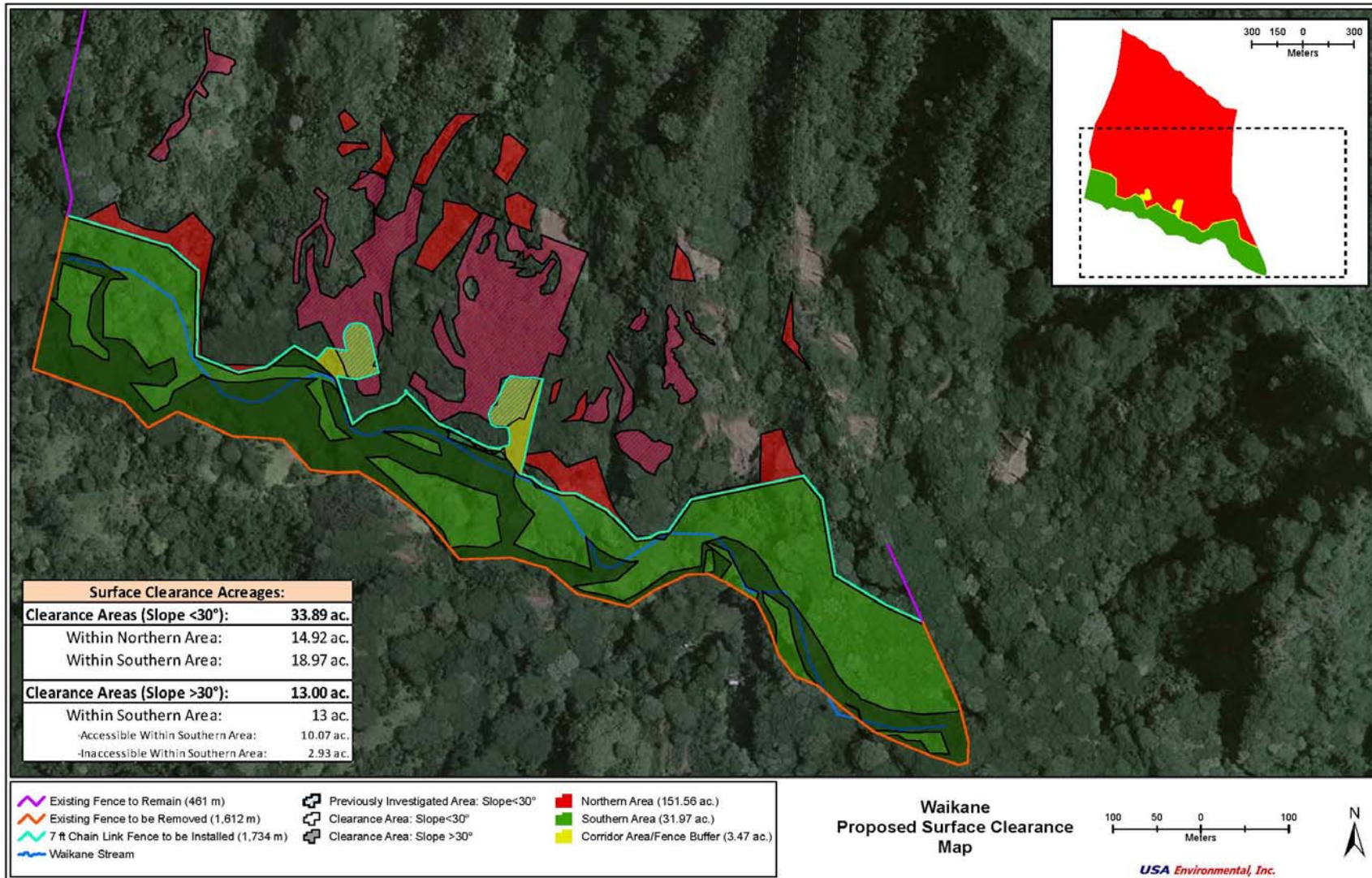
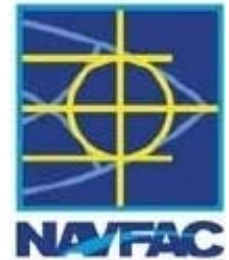


Waikane Spring Corridor



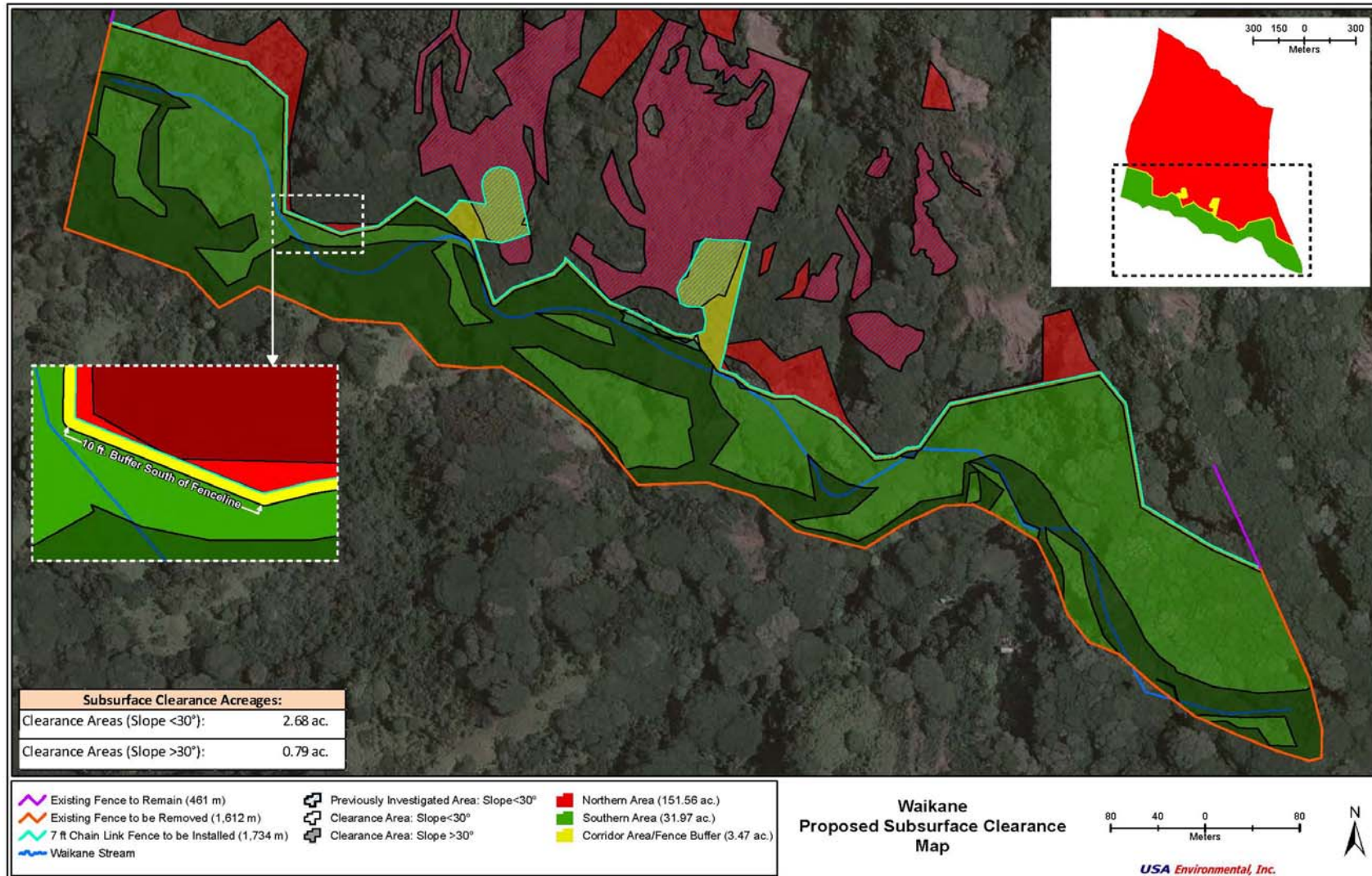
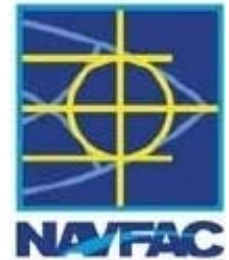


RA Map: Surface Clearance Plan



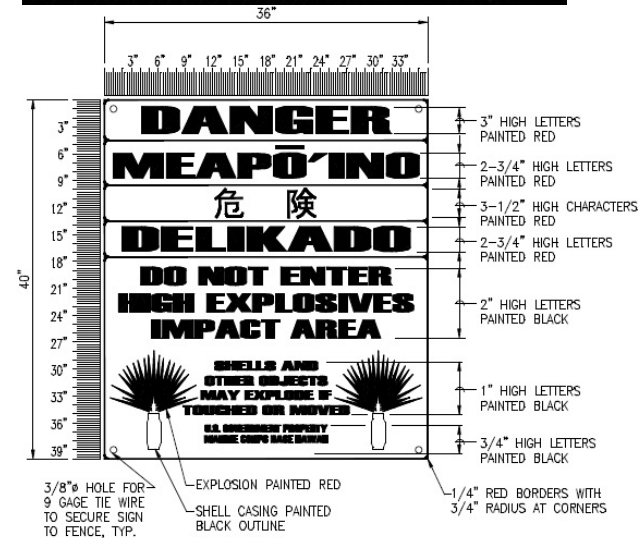
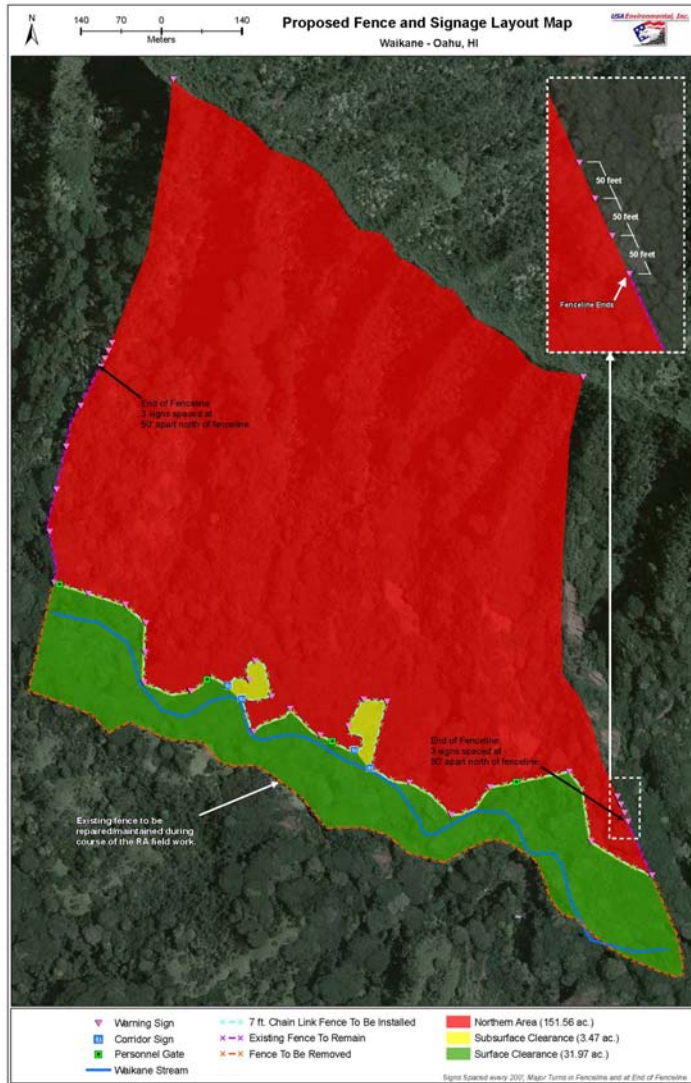
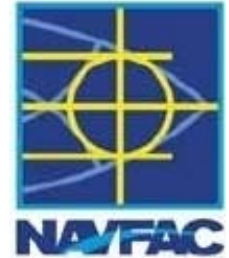


RA Map: Subsurface Clearance Plan





RA Map: Fencing and Signage Plan



NOTES:

- FENCE WARNING SIGNS SHALL BE POSTED AT 200 FEET MAXIMUM INTERVALS ALONG FENCE WITH THE TOP OF SIGN TWO FEET BELOW TOP OF FABRIC.
- ALL SIGNS WILL BE MADE OF ALUMINUM WITH A MINIMUM THICKNESS OF 1/8" THICK.
- THE SIGN BACKGROUND SHALL BE WHITE.



Remedial Design Schedule



- **Final RD (March/April 2013)**
- **RA Contract Award (29 March 13)**
- **RA Field Work (2013-2014)**
- **Long-term Maintenance**